

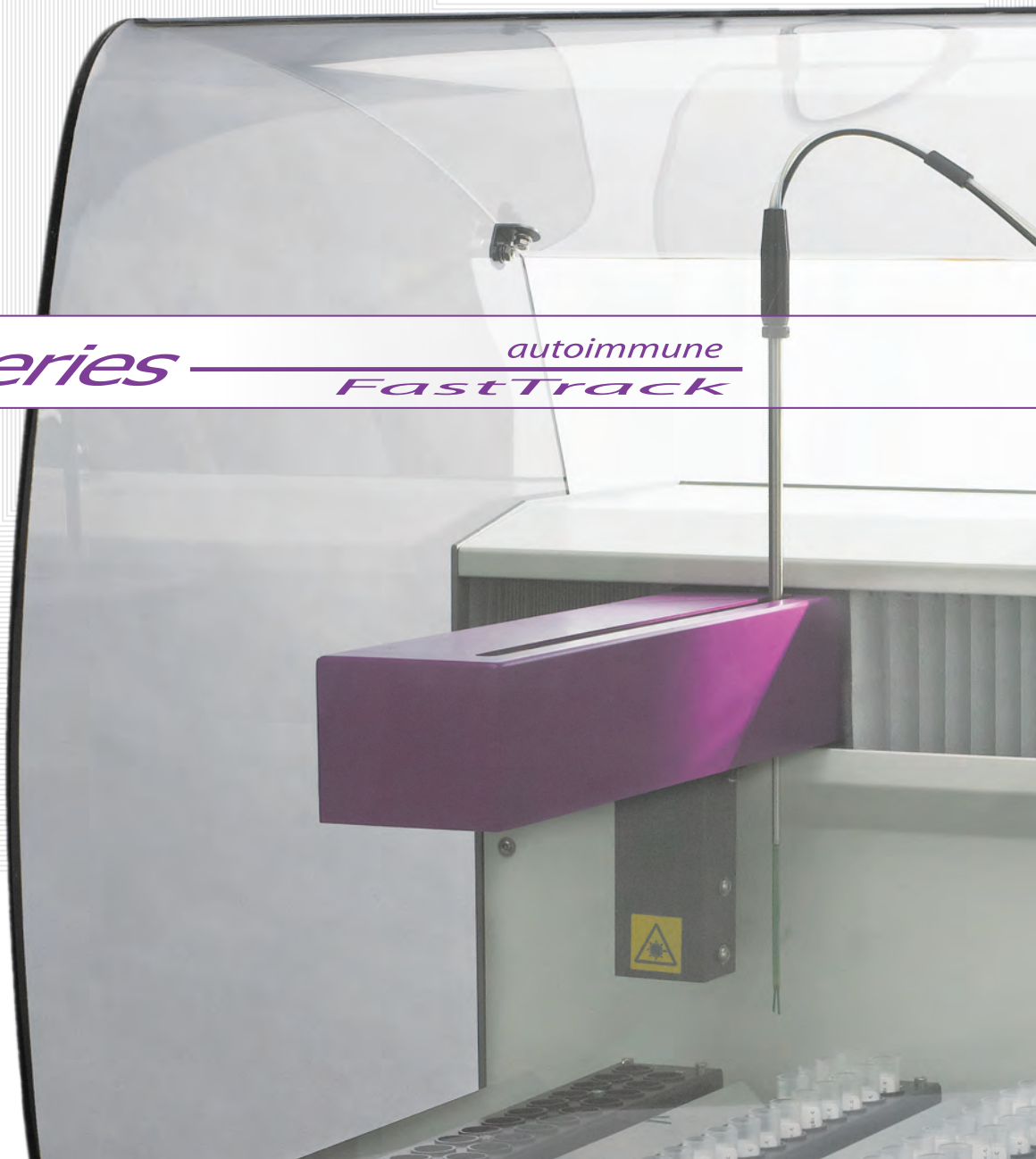
# Autoimmune *FastTrack* For Streamlined Diagnostic Testing

---

*AFT2000*<sup>®</sup>

*AFT3000*<sup>™</sup>

*AFT Series* — autoimmune  
*FastTrack*



## AFT2000®



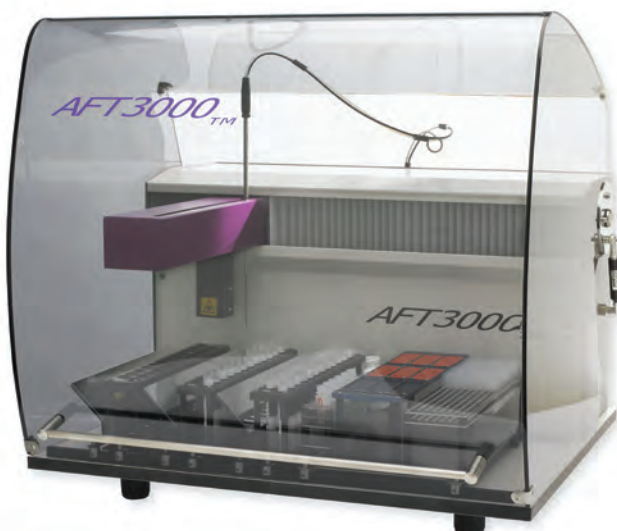
## AFT Series

The **Autoimmune *FastTrack* Series** of instruments are reliable pipetting robotic platforms that automate the entire line of Immuno Concepts slide and ELISA assays.

The instruments deliver the highest level of precision, accuracy, interfacing and tracking capabilities to optimize traceability and provide consistent results while freeing the technologist to perform other tasks.

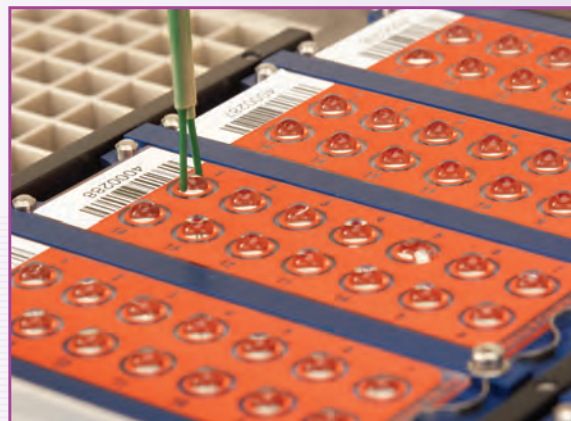
The hardware and software provide easy set-up, walk-away operation, and minimal maintenance. Each AFT2000® and AFT3000™ instrument is programmed based on the Immuno Concepts assays and specific methodologies used by the laboratory. Both instruments are capable of interfacing with Laboratory Information Systems and can be bi-directionally integrated with the Immuno Concepts Image Navigator.®

## AFT3000™



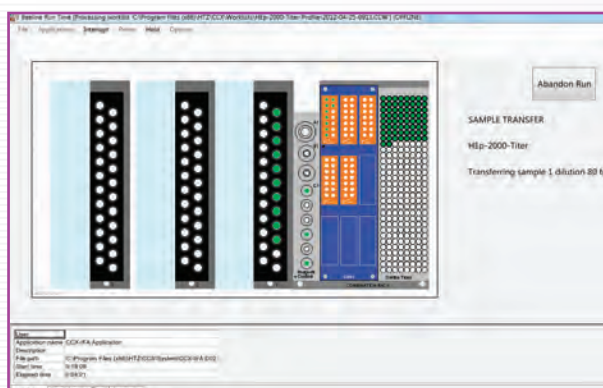
## Reliable

- Dual nozzle PTFE-coated probe eliminates carryover.
- Pipetting precision and accuracy CV's <5% at 5ul.
- Automated self-check program provides report on all critical functions.
- Reliable and durable platform that maintains coordinate settings.
- AFT3000™ comes standard with cover, providing added security and protection for hardware and assay components.



Precision Pipetting

## User Friendly

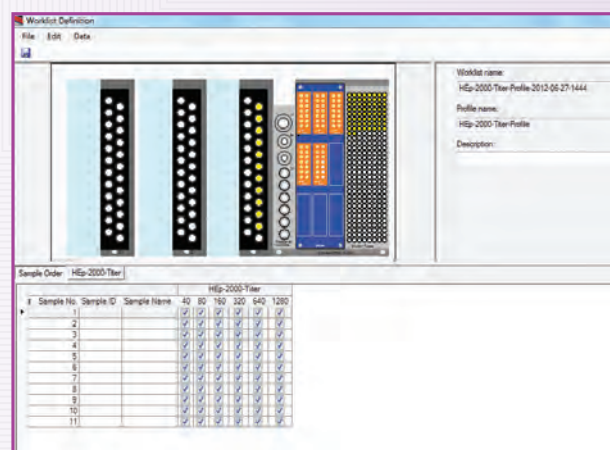


Progress Tracking Graphics

- Graphic interface for continuous update on progress.
- Color display for easy recognition during worklist entry and run progression.
- AFT3000™ offers automated barcode reading of samples to save time and guarantee an error-free worklist.
- Walk-away system for processing samples.
- Requires minimal maintenance.

## Versatile

- Graphic interface displays running total of slides/strips/samples required for each test during worklist entry.
- Sample and control specific dilutions can be selected on an individual basis.
- Flexible placement provided for controls during worklist entry.
- AFT2000® offers multiple rack configurations for customization.



Simplified Worklist Creation

## Comparison Chart

### AFT2000®

### AFT2000® HCR

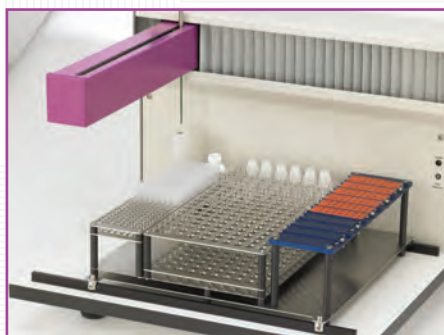
### AFT3000™

Sample Tube Capacity	96	160	72
Slide Capacity	*Up to 16	10	9
ELISA Capacity	*Up to 4 plates	N/A	Up to 2 plates
Reagent Positions	12	1	3-4
Control Positions	12	6	6
Serial Dilution Prep Method	Microplate	Bullet Tube	Bullet Tube
Throughput For Maximum Samples	1:45 hr.	2:15 hr.	1:30 hr.
Run Different Tests Together	Up to 6 Tests	Up to 6 Tests	Up to 6 Tests
Able To Run ELISA	Yes	No	Yes
Online / Automated Barcode Reader	No	No	Yes
Cover Included In Base Price	No	No	Yes
Footprint	18"x22"x16"	18"x22"x16"	26"x22"x25"
Weight	43 lbs.	43 lbs.	73 lbs.

\* Depends on workload



AFT2000® Standard Rack



AFT2000® High Capacity Rack



AFT3000™

## Products for Use with AFT Series of Instruments

- IFA Assays: HEp-2000®, HEp-2, nDNA (*C. luciliae*), ANCA (ethanol and formalin fixed), tissue slides
- Colorzyme® Assays: HEp-2000®, HEp-2, nDNA (*C. luciliae*)
- ELISA Assays: RELISA® ANA Screen, RELISA® ENA Screen, RELISA® ENA Multiparameter, RELISA® Cardiolipin Screen, RELISA® Cardiolipin IgG and IgM, RELISA® dsDNA and dsDNA-ES, RELISA® MPO/PR3

Distributed by:

**GFMD Ltd.** 2280 Springlake,  
Ste 106, Dallas, TX 75234

AFT2000®, HEp-2000®, Colorzyme®, and RELISA® are registered trademarks of Immuno Concepts, N.A. Ltd. AFT3000™ is a trademark of Immuno Concepts, N.A. Ltd.